

LogBase – Software for geological log libraries

LogBase is an application developed by Oryx Software, Inc. specifically created for geological log libraries. LogBase's numerous features provide geological log libraries and its members with the tools to work more efficiently. Some features are: 1. A powerful log search engine, 2. Map-based log selection, 3. Log check-out/check-in 4. Digital log file management amongst many others

Search Engine

LogBase's powerful search engine allows users to find log records easily by filtering by any of the many log attributes such as state, county, operator, lease, API #, completion date, total depth to name a few.

Users enter one or more keywords on any combination of log attributes and LogBase automatically generates advanced search queries that can sift through hundreds of thousands of database records in seconds thanks to its optimized database structure.

Well mapping/selecting

LogBase incorporates a graphical map that users can utilize to plot the locations of the currently selected wells or they may use it to graphically select logs directly from the map.

Hard copy log status reporting

When users search for logs, LogBase displays the status of the logs by color-coding the results grid in the windows version and by using icons on the web version. Valid log statuses are 1. Available, 2. You already have it, 3. Unavailable, 4. You requested it, 5. For in-house use only, 6. On hold for you, 7. Recalled from you.

The status of the log depends on the user requesting the information, the total number the library has for a particular log, the number of copies currently checked-out and the library's policy as far as the number of days a member can have a log before it can be recalled from him/her.

Log check-out/check-in process

Keeping track of log prints is easy with LogBase check-out/check-in functionality. Thanks to its built in barcode printing module and check-in/out module, geological log libraries can easily keep track of the which logs any one library member has at any particular time. Members can also see at any time a list of all the logs currently checked out to their membership account.

Digital log management

LogBase provides functionality that allows geological log libraries to manage digital logs just as well as it does hard copies. LogBase manages a secure central repository of digital logs and makes them available to users both on the local network and via the Internet. The library administration has an option to limit the number of digital files accessed by library members per month. As an extra layer of security, every request to download images via the Internet has to be approved by a library representative.

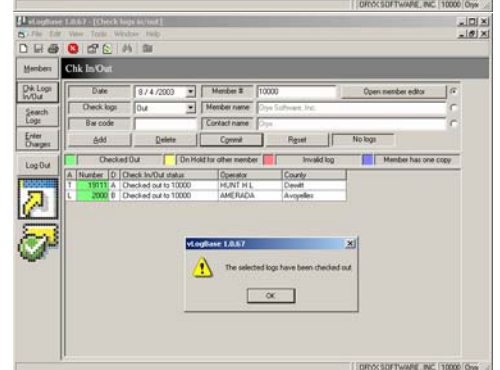
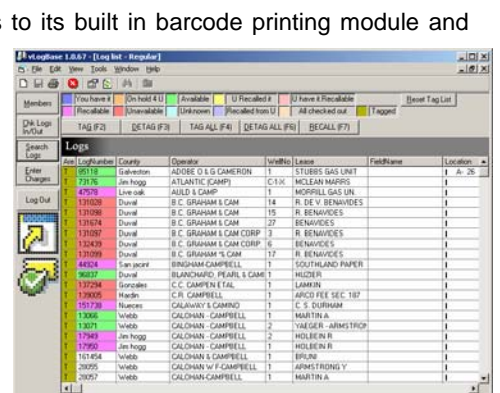
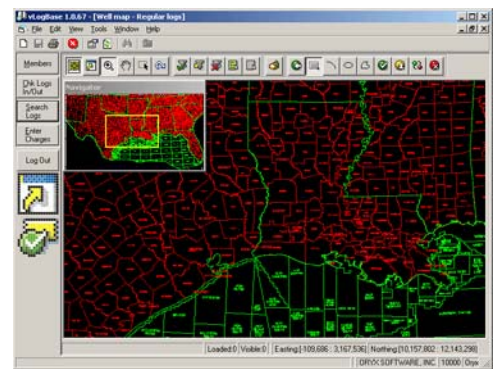
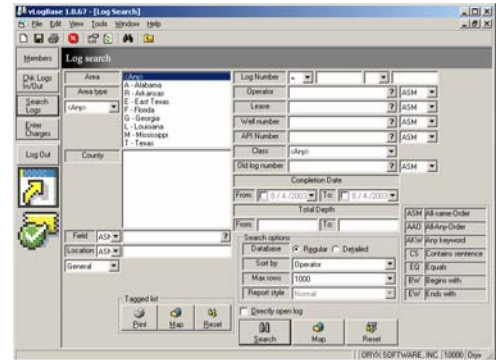
Your collection of logs in digital format can be progressively increased thanks to LogSentinel, a server-side component that documents new logs in digital format as they are scanned into a specific folder. LogSentinel automatically updates LogBase's database and places the scanned logs in LogBase image repository.

Apply charges to member accounts

Apply charges to member accounts for items such as

- Copies
- Faxes
- Library services
- Ordering maps
- Telephone use
- Postage

Customize your charge categories and add comments to charges for future reference



eLogBase[†] – LogBase for the Internet

The Internet version of LogBase exposes a great amount of functionality directly from the library's website[†]. By logging onto the library's website, library members can search for logs, compile a "shopping cart" style list and submit it as a request to library personnel.

Additional functionality includes:

- List logs currently checked out to the member's account
- List logs recalled from/by the member
- Order logs currently not in the possession of the library
- Order scout tickets and/or order production data
- Order hard copy logs to be scanned

Proven track record

LogBase has already proven its worth at two large geological log libraries in Houston, TX

- Gulf coast Geological library. Implemented in late 1999.
- Geological Data Library. Implemented in late 2003.

Both libraries chose Oryx Software's LogBase after evaluating different alternatives. Oryx software personnel procured and installed newer hardware (servers, workstations, barcode readers, barcode printers), imported data from the libraries' legacy systems into LogBase's database and created the website that worked as storefront for LogBase for the internet.

Library personnel and member have praised both the functionality of LogBase and the service received from Oryx Software, Inc. personnel.

Real benefits

- Reduce the time it takes you to find logs
- Allow library members to search for logs from their office or home
- Accept request online for logs, scout tickets, production data
- Offer your logs in digital format via the Internet

System requirements

Server

Windows 2000 Server or later
Microsoft SQL Server 2000 or later
Microsoft Internet Services

Workstation

Windows 2000 Pro or later
(Although LogBase will run under Windows 95/98/Me and XP Home edition, some functionality such as barcode printing and digital image management requires Windows 2000 Pro or later)

Microsoft Excel 97 or later
(LogBase uses Excel as a printing engine)

Internet

Microsoft Internet Explorer 6.0 or later
(MS IE 6.0 or later recommended)



LOG #	COUNTY	LEASE	OPERATOR	WELL NO.	APPRO.	TR.	SOURCE	
1	LOUISIANA	HELSIN W/O DR	FOREST OIL	3	1200	8/0/000		
2	L014039D	CAMERON	FAYVOR JH	U/S OIL OF LA	1	1420	8/0/000	
3	L005088A	ST MARTIN	TEKACO	MORGANTO	1	1250	3/6/1997	
4	L021338A	VERMILION	HEATSBERRY	TEKACO	1	18910	8/0/00002	
5	L005078F	JEFFERSON DAVIS	HILLMAN & (DS)	AMOCO BRCO	3	1703	11/8/1998	
6	L041524A	CAMERON	D.V. DOLAND	STONE OIL CORP.	2	12200	8/0/0000	
7	L048656A	VERMILION	L.M. ABBINRE	AMERADA HESS CORP.	1	18800	3/6/1998	
8	L052207A	VERMILION	ANDREHE HEPS	AMERADA HESS CORP.	1	13900	3/6/1998	
9	L048524A	CAMERON	HELSIN W/O (DS)	FOREST OIL CO.	10	1200	8/0/0000	
10	L022762A	VERMILION	HERBERT ALTOULI (DS)	MOBIL EXPL & PROD. U.S. INC.	15	14077	4/0/1997	
11	L064807A	LAFAYETTE	MOUTON S. (STP)	LOUISIANA LAND (EXCHANGE)	1	16512	3/6/1998	
12	L086238A	VERMILION	LEAHLEBLANC	AMERADA PETR. CORP.	1	11110	12/8/1998	
13	L066620B	VERMILION	REVVIS J. LROE	EXXON EXPLORATION CO.	1	115-21884	10/60	8/01/0002
14	T050184A	GALVESTON	TEX ST TR. 237-A	TEKACOR	1	11200	8/0/01988	
15	T047548A	WALLACE	VTURRAL NCT -2	TEKACO	15	2818	5/8/1997	
16	T047575A	WALLACE	VTURRAL & L.NCT	TEKACO	12	8167	6/8/1997	
17	T060254A	GALVESTON	ST. TR. 239	HOUSTON OIL & MIN.	1	10864	8/0/1998	
18	T051302A	GALVESTON	THOMPSON OIL UNIT 1	PLACID	1	12850	12/16/1997	
19	T060215A	GALVESTON	ST. TR. 237	HOUSTON OIL & MINERALS	1	11454	1/8/1999	
20	T066705B	GALVESTON	HELEN 1	GENERAL CRUDE	1	14848	12/18/1997	
21	T074216A	GALVESTON	STATE TRACT 343	HOUSTON OIL & MINERALS	8	8027	8/0/1998	
22	T060199B	WALLACE	SHAWBERRY	TEXAS OIL & GAS	1	17000	8/0/1997	
23	T060180A	GALVESTON	STATE TRACT 115-A (DS)	HOUSTON OIL & MIN.	2	18000	12/16/1997	